



COMUNE DI NETTUNO

PROVINCIA DI ROMA

LAVORI URGENTI DI CONSOLIDAMENTO STATICO E RESTAURO CONSERVATIVO DA ESEGUIRSI SULLA TORRE DI FORTE SANGALLO



PROGETTO ESECUTIVO

D.lgs 163/2006

Il Dirigente Area LL.PP.:
ing. Benedetto Sajeve

R.U.P.:
arch. Federica Sodani



studio di architettura comes del gallo
piazza greca 37 - 00196 roma (rm)
Tel.: 0696521540 - Cell.: 3389826768 - Fax.: 0696521540
E-mail: l.comes@fastwebnet.it
C.F.: cmslvi64s62h501q - P.IVA: 10767520587
www.architetticomesdelgallo.it

Progettista:
arch. Livia Comes

SCALA

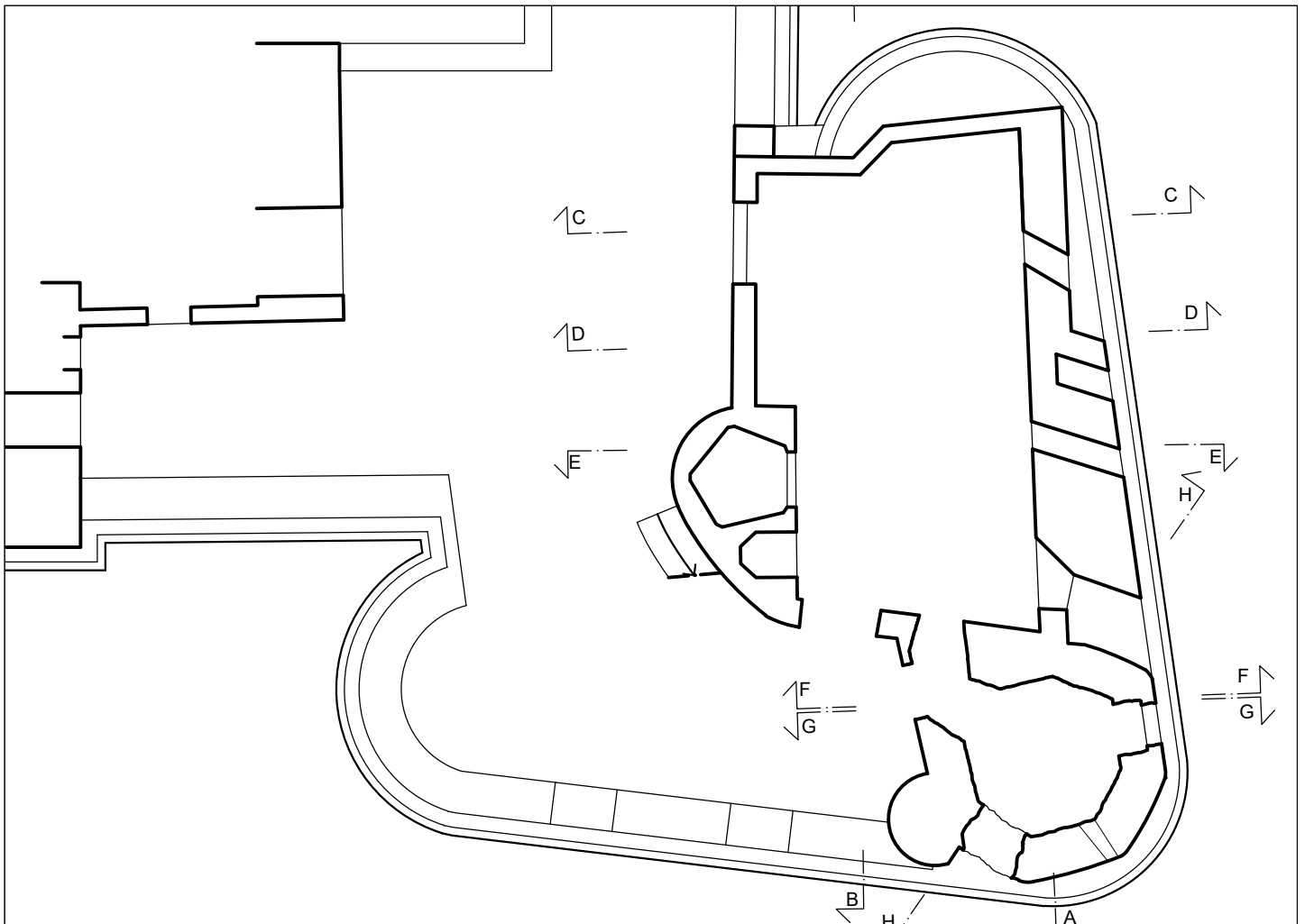
--

TITOLO ELABORATO

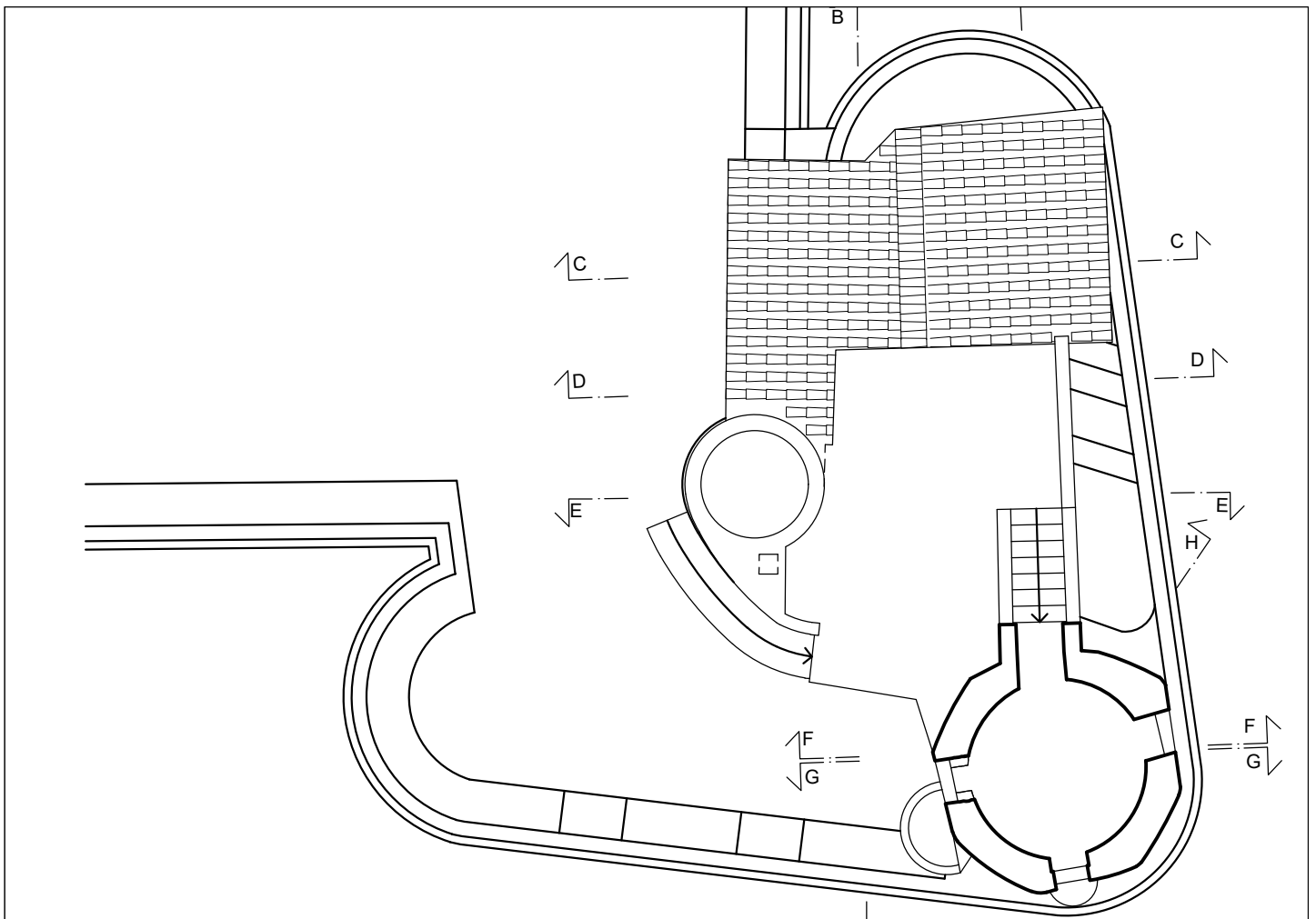
FOTOPIANI

DATA

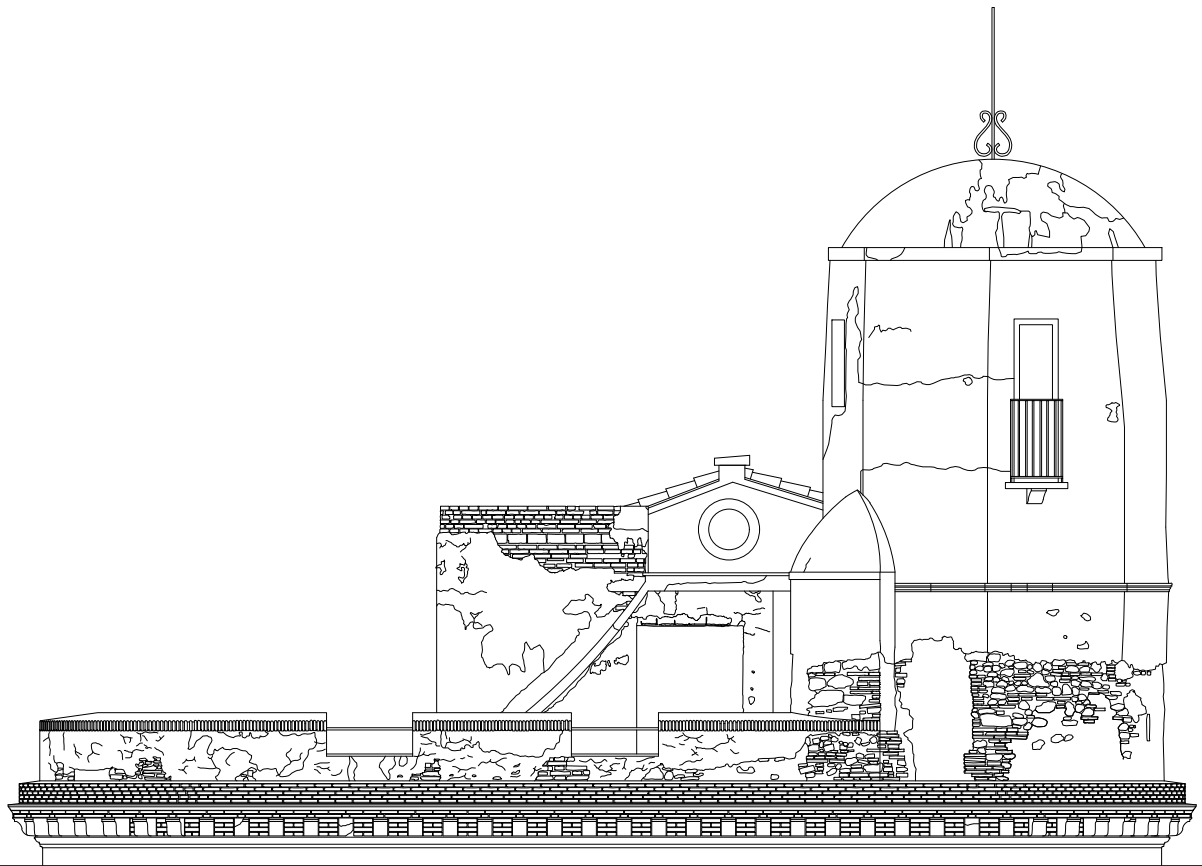
Ottobre 2016



Torretta di guardia e locali accessori - Livello 0



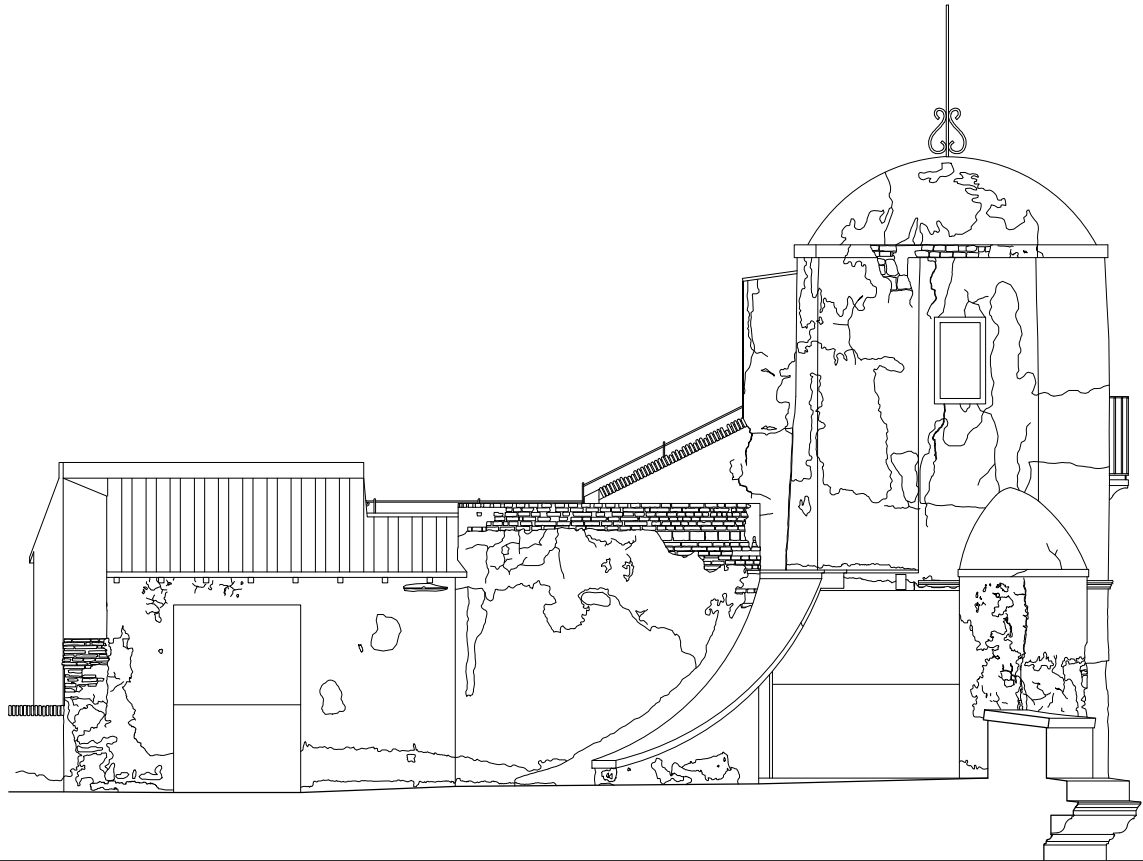
Torretta di guardia e locali accessori - Livello 1



Prospetto sud



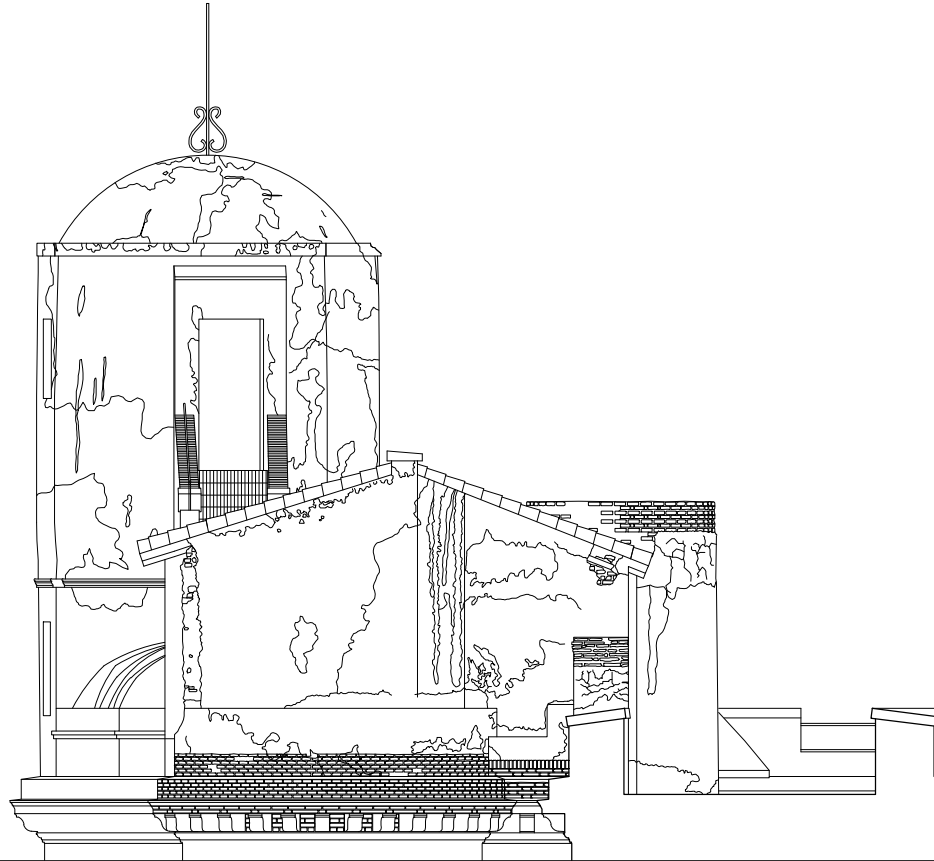
Prospetto sud - Fotopiano



Prospetto ovest



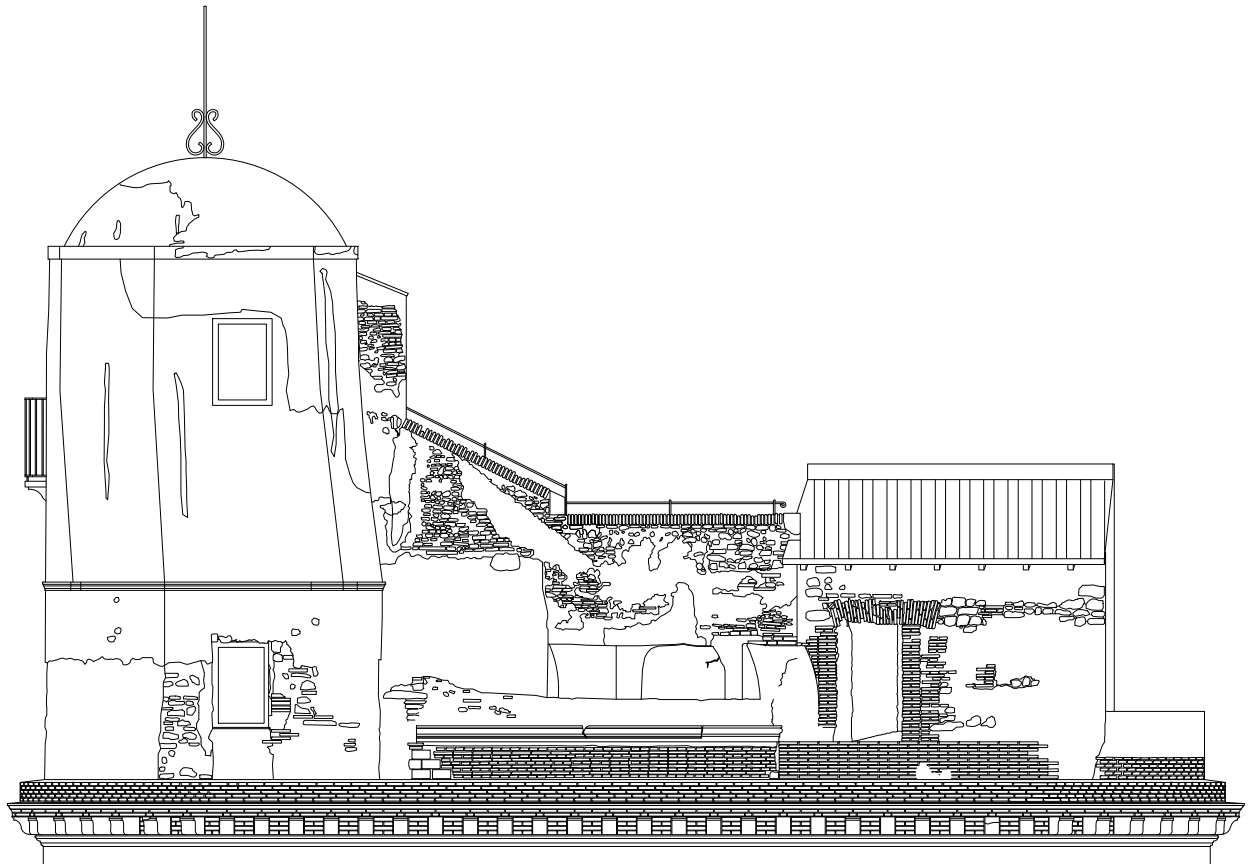
Prospetto ovest - Fotopiano



Prospetto nord



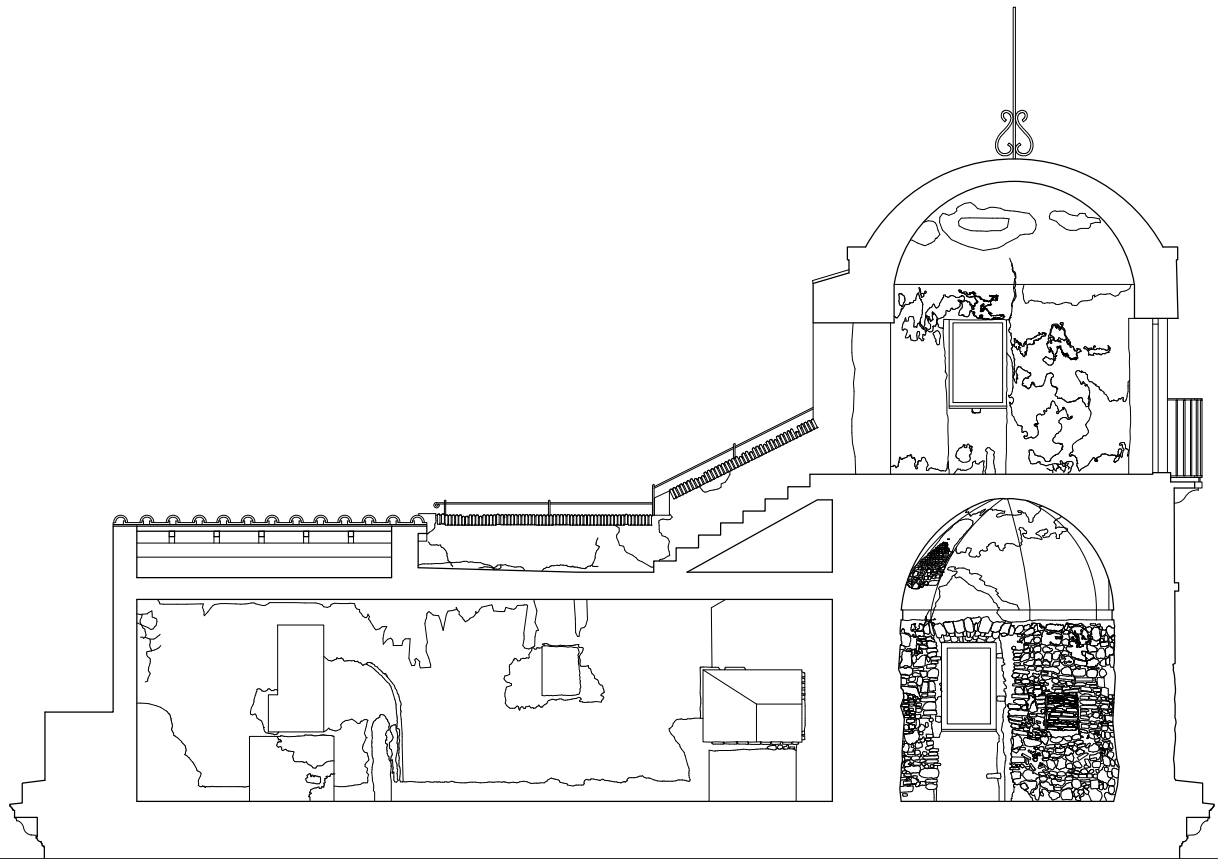
Prospetto nord - Fotopiano



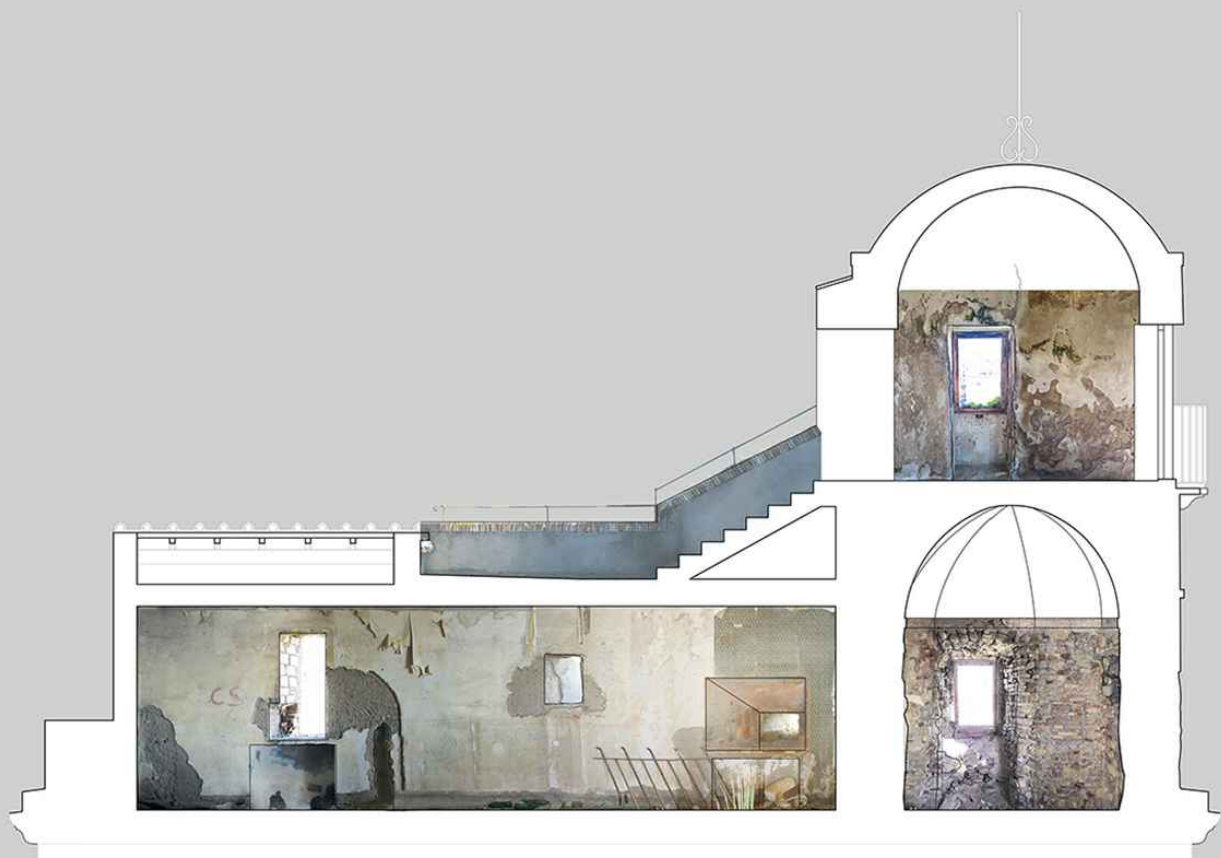
Prospetto est



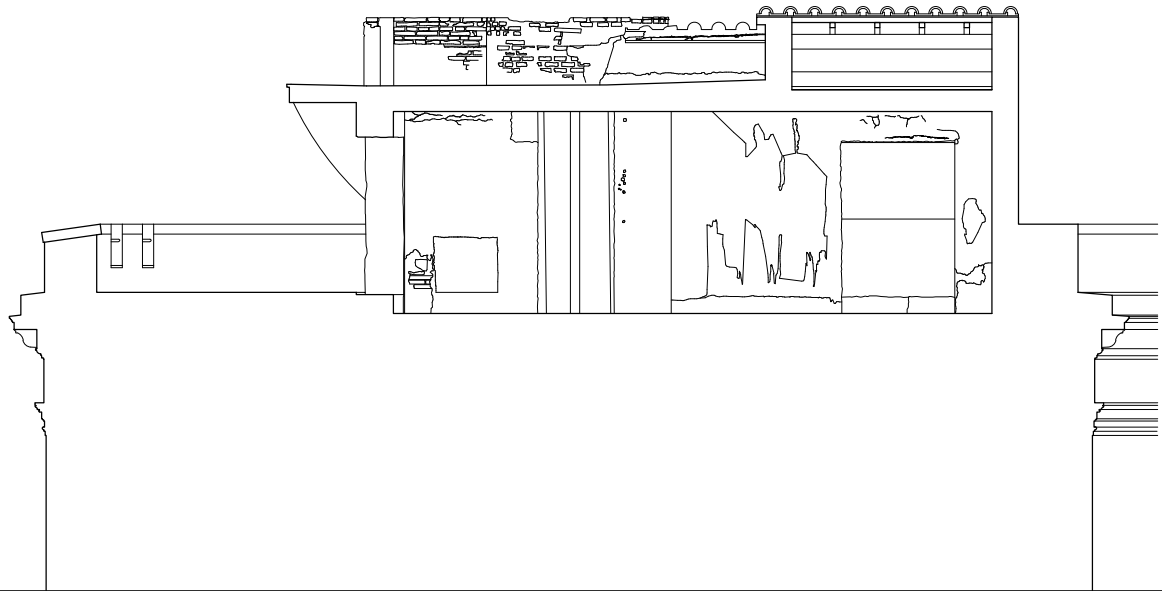
Prospetto est - Fotopiano



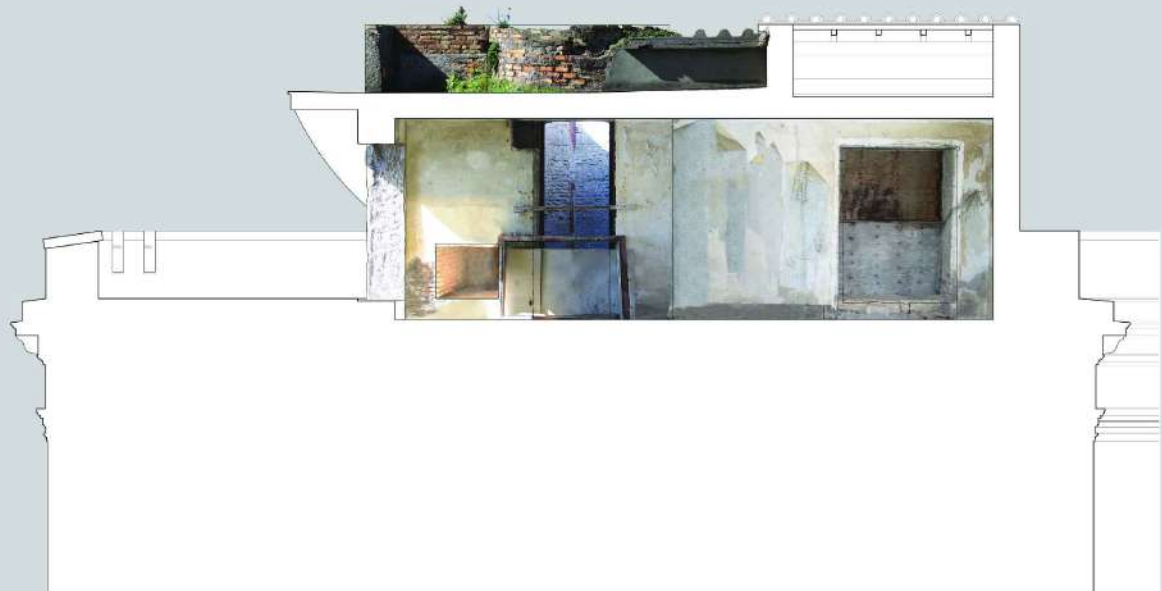
Sezione AA



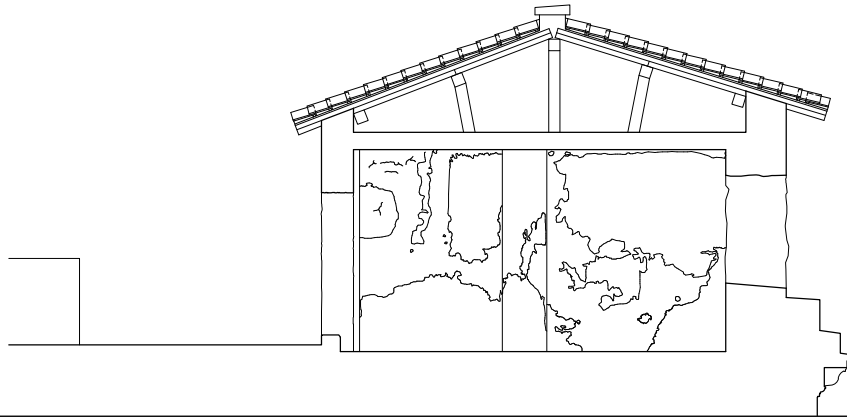
Sezione AA - Fotopiano



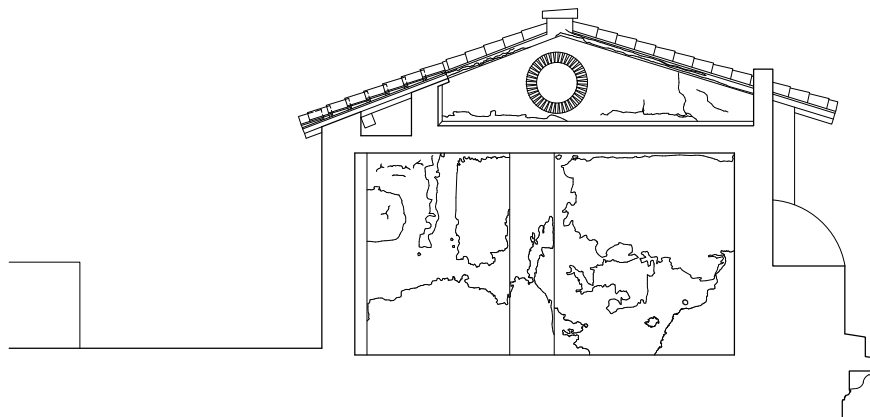
Sezione BB



Sezione BB - Fotopiano



Sezione CC



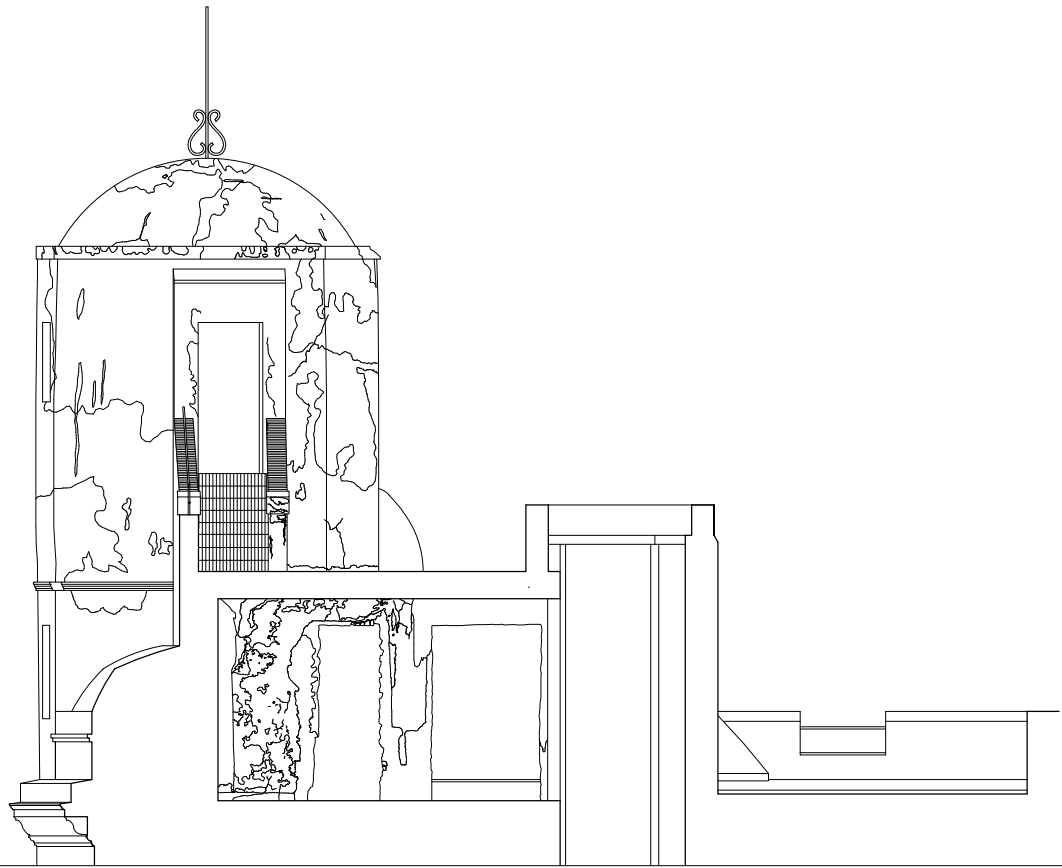
Sezione DD



Sezione CC - Fotopiano



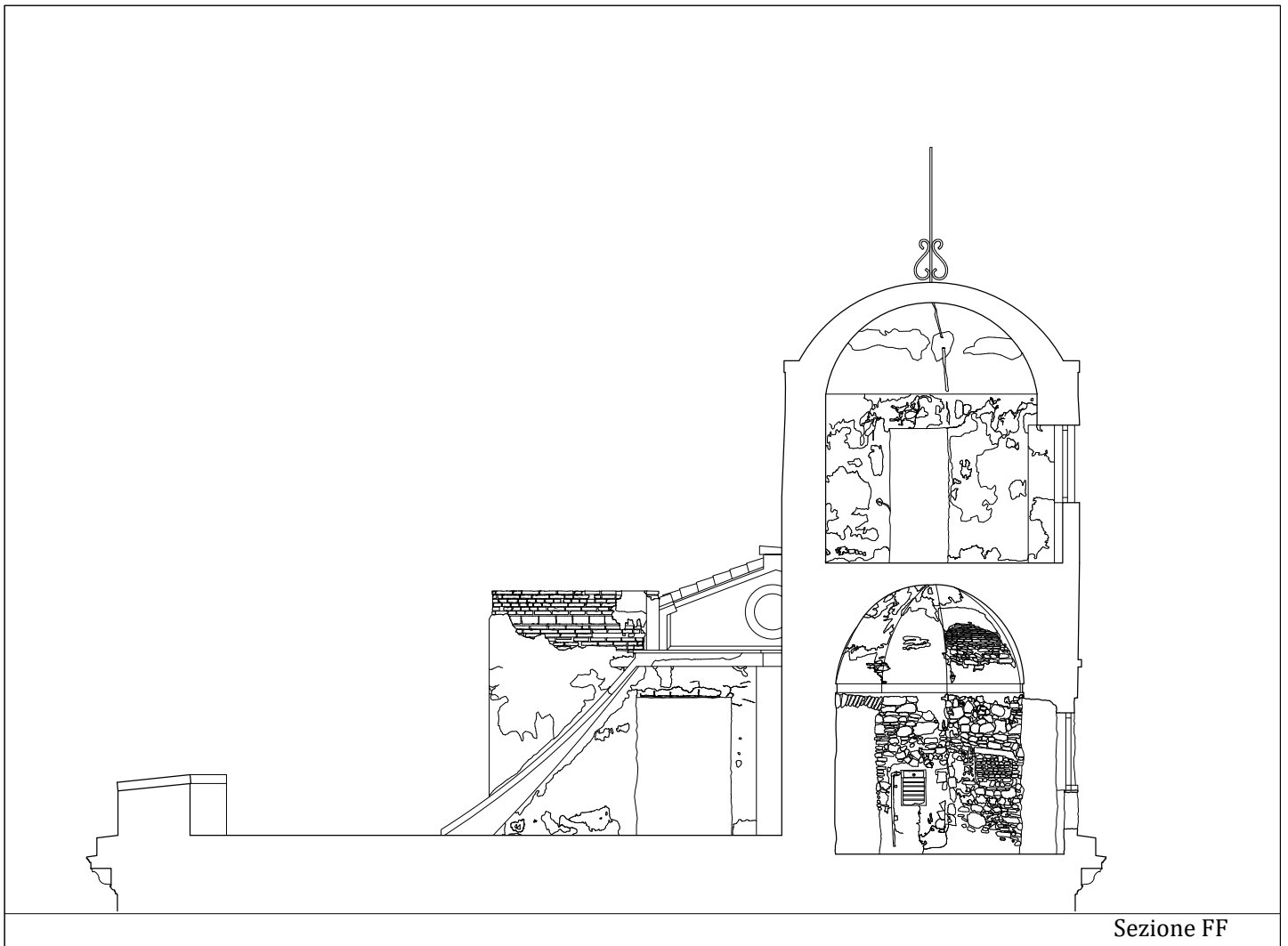
Sezione DD - Fotopiano



Sezione EE



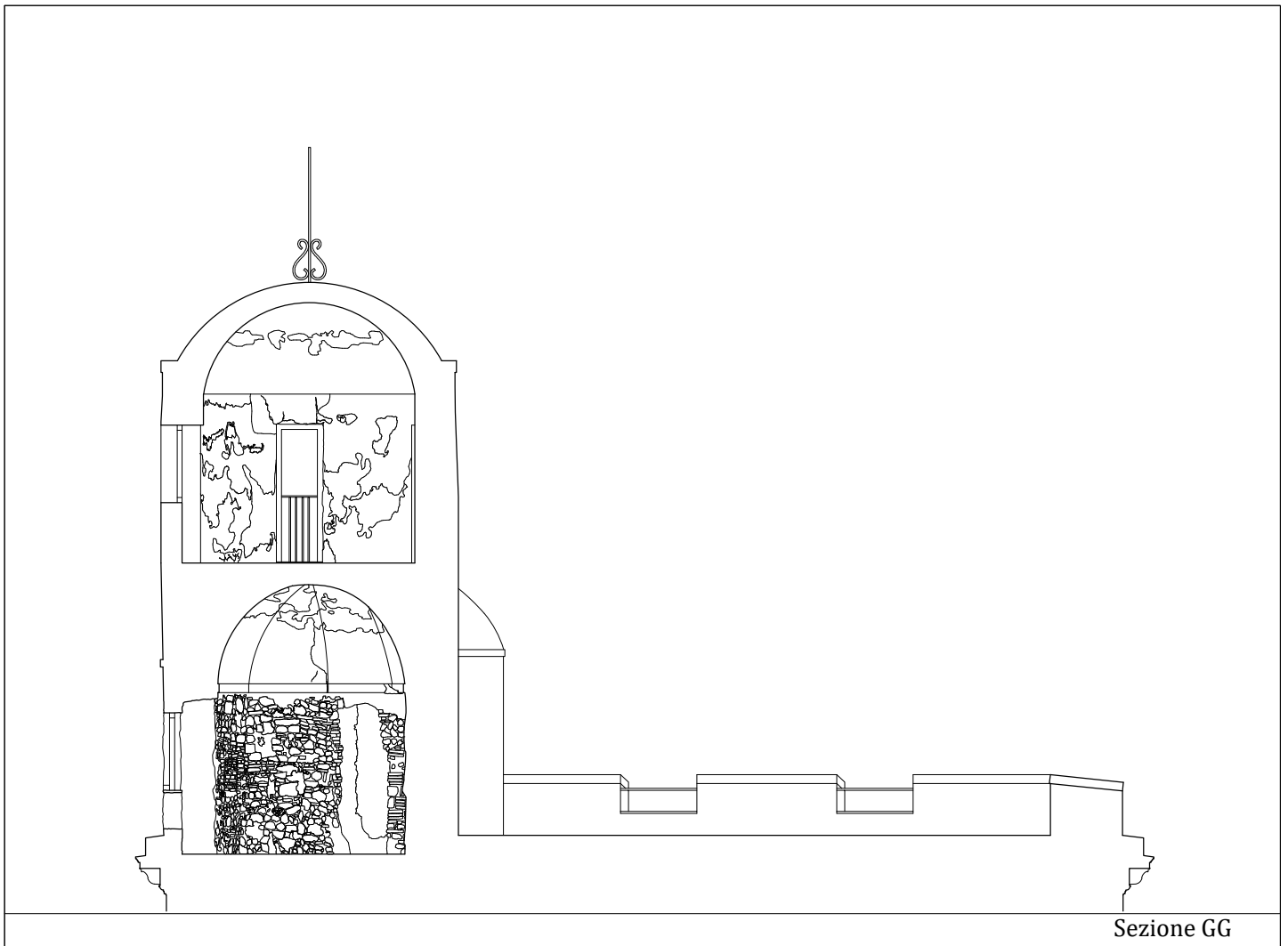
Sezione EE - Fotopiano



Sezione FF



Sezione FF - Fotopiano



Sezione GG



Sezione GG - Fotopiano

